



## MIST<sup>®</sup> - DT Dynamic PTZ Tracker

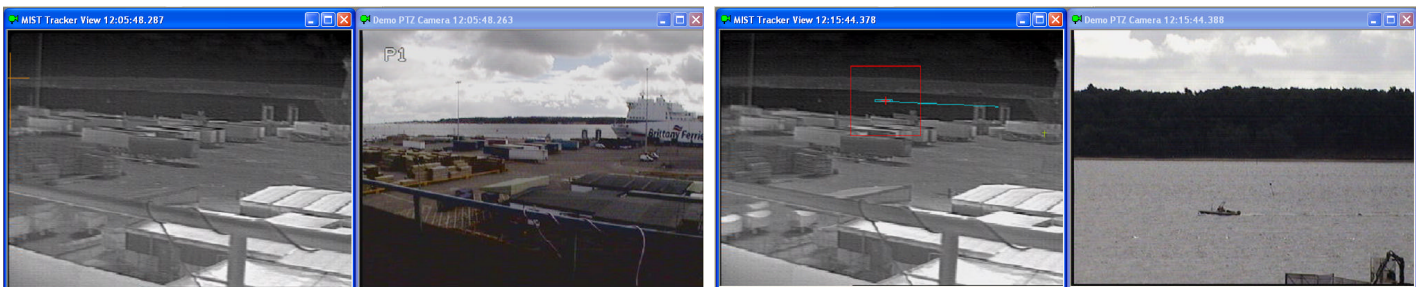


The NetWatch MIST DT uses the market leading MIST detection and tracking system to dynamically control a PTZ camera. Using this system it is possible to automatically and accurately follow tracked targets within the TI sensor's field of view without the intervention of an operator.

MIST DT is designed to work with a thermal fixed camera (the sensor) and a PTZ visual spectrum camera that conforms to the extended control protocol that includes real position coordinate system.

### Peace Of Mind

Whether your assets are local or remote you can rest assured that the AR&T MIST Dynamic Tracker is ever vigilant, protecting, reporting and recording video and alarm data; which in turn allows you to respond quickly to the threat and collate accurate evidential quality material, making your case more effective to prosecution.



No activity

Wide FOV

MIST detects target at range

Full zoom & accurate

No operator intervention is required. Zoom extend rectangle (Red) overlaid onto thermal sensor view

### Features

Mist is the driving engine behind this product and allows full use of its extensive virtual sensor features as a precursor to the dynamic PTZ tracking features given below:-

- Priority zone
  - Targets within the zone have priority use of PTZ camera tracking.
  - Targets outside the zone are tracked when there are no targets in the zone
- Automatic target Priority
  - Largest target
  - Sequence through all targets
    - Selectable dwell on target
- Manual priority override
  - User selected target tracking
  - Manual PTZ control
  - Selectable override hold off period

